

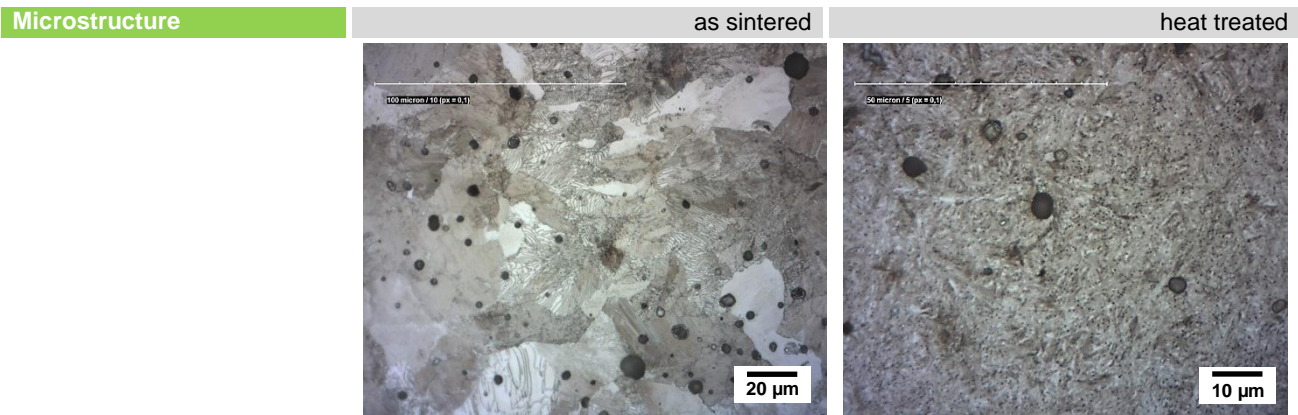
Data Sheet — 100Cr6

for technical applications

Comparable Standards	DIN 1.3505	AISI E52100	UNS G52986
	ISO 22068 MIM-52100-450		

Composition	Fe	C	Cr	Si	Mn	others
	min (wt.%)	-	0.72	1.35	-	-
	max (wt.%)	Bal.	1.05	1.65	0.4	0.8

Typical Properties	Density	Hardness	R _m	R _{p0.2}	A ₁₀	
	g/cm ³	HV10	MPa	MPa	%	
	as sintered	≥ 7.4	≥ 200	≥ 750	≥ 450	≥ 3
	heat treated		≥ 510			



Characteristics bearing steel with high hardness and high wear resistance

Typical Applications bearing industry, mechanical engineering, automotive, tools; examples: ball, roller or needle bearing, measuring instruments, cutter, screw die, fuel-injection system etc.

These data presented here are based on our current knowledge and experience, but no liability can be assumed.