

Data Sheet — 316L

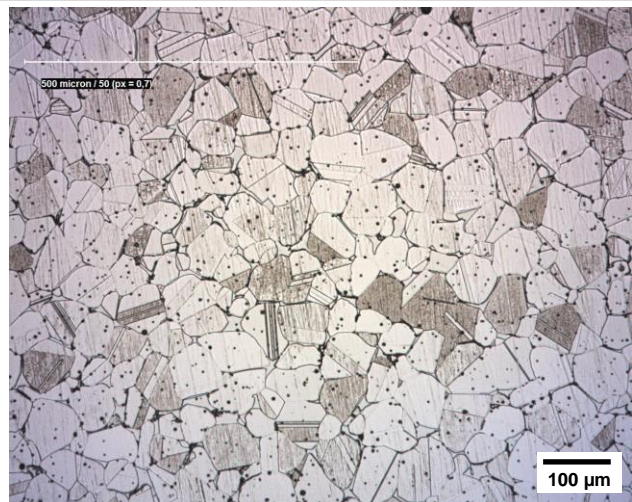
for technical applications

Comparable Standards	DIN 1.4404	X 2 CrNiMo 17 13 2	AISI 316L
	ISO 22068 MIM-316L-140	MPIF Standard 35 MIM-316L	

Composition	Fe	C	Cr	Ni	Mo	Mn	Si	others
	min (wt%)	-	16.0	10.0	2.0	-	-	
max (wt%)	Bal.	0.03	18.5	14.0	3.0	2.0	1.0	<1.0

Typical Properties	Density	Hardness	R _m	R _{p0.2}	A ₁₀
	g/cm ³	HV10	MPa	MPa	%
as sintered	≥ 7.6	≥ 100	≥ 450	≥ 140	≥ 40

Microstructure as sintered



Characteristics Austenitic stainless steel

Typical Applications Components with enhanced demands on corrosion resistance: Parts in the area aviation, mechanical engineering, electronic equipment, chemical and food industry, medical engineering, consumer goods, jewelry.

These data presented here are based on our current knowledge and experience, but no liability can be assumed.