

# Data Sheet — Titan Grade 4

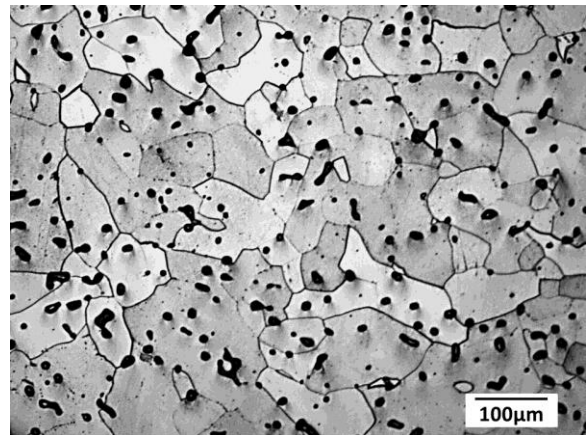
for technical applications

<b>Comparable Standards</b>	DIN 3.7056	ASTM grade 4	UNS R50700
	ISO 22068 MIM-Ti-400		

<b>Composition</b>	Fe	C	O	N	others
	min (wt%)	-	-	-	-
	max (wt%)	Bal.	0.2	0.4	0.1

<b>Typical Properties</b>	Density	Hardness	R <sub>m</sub>	R <sub>p0.2</sub>	A <sub>10</sub>
	g/cm <sup>3</sup>	HV10	MPa	MPa	%
	as sintered	≥ 4.2	≥ 160	≥ 500	≥ 400

**Microstructure** as sintered



**Characteristics** Non-magnetic, lightweight alloy with a high corrosion resistance

**Typical Applications** aviation and aerospace, motorsport, watchmaking industry, food industry, medical engineering, prosthetic dentistry, sport goods

These data presented here are based on our current knowledge and experience, but no liability can be assumed.